



# 2025 ASHE Update

4/3/2025

ASHE Region 6 – Rochester, MN

© 2025 American Society for Health Care Engineering,  
a professional membership group of the American Hospital Association  
155 N. Wacker Drive, Suite 400 | Chicago, IL 60606  
ashe.org | ashe@aha.org | 312-422-3800



*Advancing Health in America*

# Disclaimer

---

The views and opinions expressed in this presentation are purely those of the presenters and shall not be considered the official position of The American Hospital Association or the American Society for Health Care Engineering.

The guidance provided in this presentation shall not be considered professional design or engineering advice.

The information provided may not apply to a viewer's specific situation and is not a substitute for application of the viewer's own independent judgment or the advice of a competent professional.

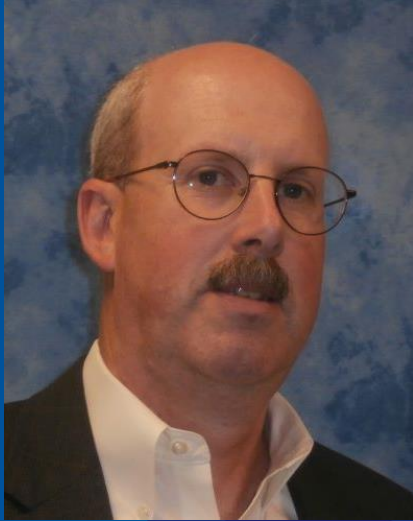
ASHE does not make any guarantee or warranty as to the accuracy or completeness of any information provided. ASHE and the authors disclaim liability for personal injury, property damage, or other damages of any kind, whether special, indirect, consequential, or compensatory, that may result directly or indirectly from use of or reliance on information from this presentation.





# Danielle Gathje, MBA, CHFM, SASHE

ASHE Region 6 Representative  
Vice President, Hospital Operations  
Fairview Health Services  
St. John's Hospital  
Maplewood, MN



# Michael A. Hatton, MBA, CHFM, FASHE

ASHE President

Vice President Facilities Engineering/Construction

Memorial Hermann Health System

Houston, TX



## **Mark Mochel, BSME, MBA, CHFM, PMP, ACABE**

ASHE Associate Member Representative

Strategic Account Executive

Brightly, A Siemens Company

Grand Rapids, Michigan

# My ASHE Journey



# The American Society for Health Care Engineering (ASHE)

---



*Advancing Health in America*



[www.ahe.org](http://www.ahe.org)



[www.ahrmm.org](http://www.ahrmm.org)



[www.ashe.org](http://www.ashe.org)



[www.ashrm.org](http://www.ashrm.org)



[www.shsmd.org](http://www.shsmd.org)

# ASHE Key Staff

---



**Lizzie Ortolano**  
Executive Director,  
ASHE and ASHRM



**Chad Beebe, AIA, CHFM, CFPS,  
CBO, FASHE**  
Deputy Executive Director, Regulatory Affairs



**Tracy Dagnon, MBA, CAE**  
Senior Director,  
ASHE Strategic Operations



**Adam Bazer, MPD**  
Senior Director,  
Knowledge Product Development



**Christina Fissori, Ed.M.**  
Director,  
ASHE Member Engagement



**Jenny Hull**  
Lead Specialist,  
ASHE Governance and Chapter Relations



# Lead the Profession and Equip Professionals

# ASHE Mission, Vision and Values

---

## Mission:

Dedicated to optimizing the health care physical environment

## Vision:

To engage stakeholders in the creation of health care environments that are optimal for healing.

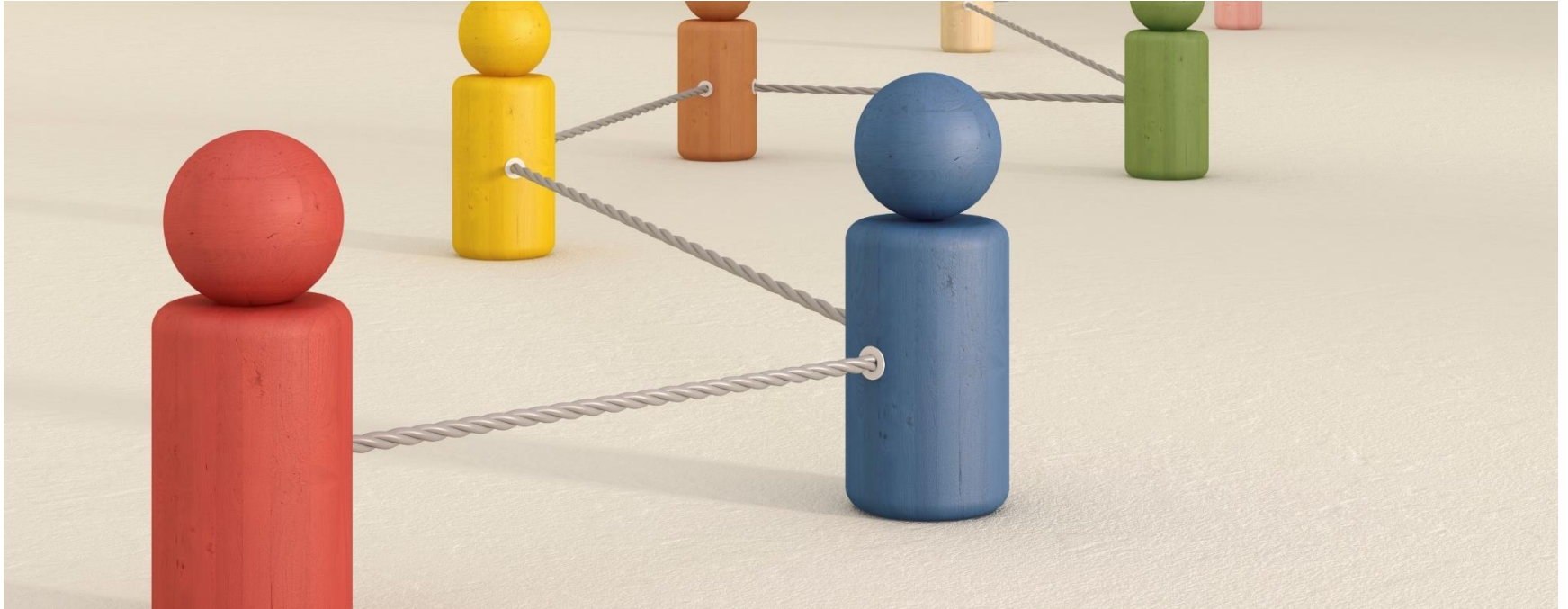
## Core Values:

Integrity, Innovation, Fellowship and Stewardship



# Progress Takes Partnership

---



# Optimizing the Profession

# Reducing Regulatory Burden

---

## Advocacy agenda and strategy

- Unified Code
- Preparing for the Future
- Sustainability
- Timely Information



# Thank You, Advocacy Liaisons!

---

- Local reps from chapters sharing policy & legislation affecting the field
- Influential in exit sign inspection win
- Help to foster important advocacy efforts

# Compliance Help!

---



[\*\*ashe.org/tools\*\*](https://www.ashe.org/tools)





# SUSTAINABILITY ROADMAP FOR HEALTH CARE

Achieving Your Sustainability Goals

## Supporting Your ASHE Sustainability Journey

Health care facilities are dedicated to working together to become more sustainable by adopting environmental, social, and fiduciary practices that support healthy, equitable, and resilient environments and communities. In support of its mission of advancing the health of individuals and communities, ASHE provides strategic thought leadership, resources, and programs to support health care organizations pursuing sustainability.

### Getting Started



#### The Basics

"Where do we start?" is a common question when embarking on a sustainability journey. Complicating the question further, the word "sustainability" is often used interchangeably with other related concepts. Standardize your team's communication to make your journey more cohesive and efficient with the [Sustainability Glossary](#).



#### Sustainability Guide

The ASHE [Sustainability Guide](#) was developed to provide step-by-step directions for developing and executing a sustainability program for your health care facility.



#### Success Stories and Sustainability Tips

Read [success stories](#) about the health care facilities that have improved sustainability and embarked on decarbonization. Gather real world examples and [sustainability tips](#) from health care industry professionals to help readers like you thrive in sustainable practices.



#### Discover Emissions Sources

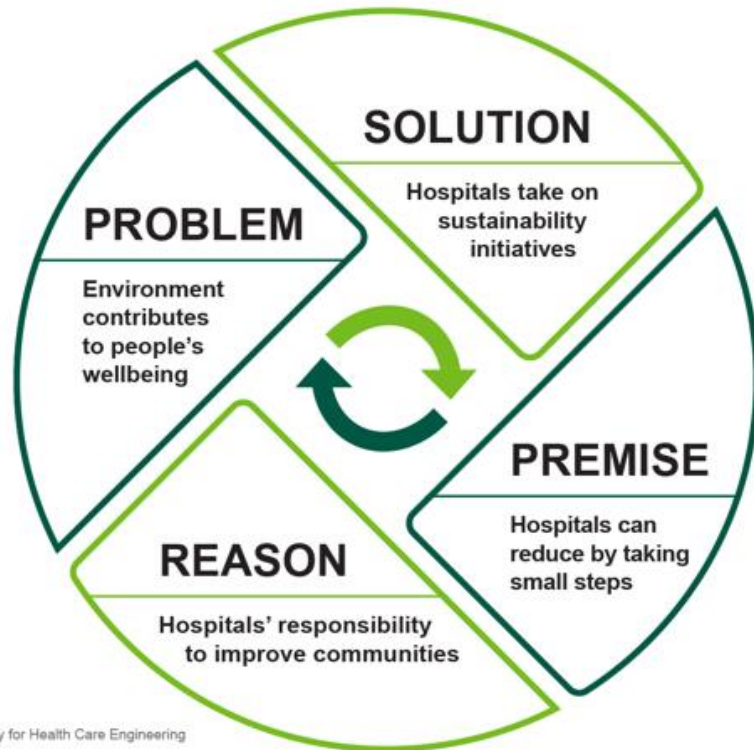
State and Local jurisdictions across the US are setting environmental sustainability and decarbonization goals and targets for commercial buildings. [Learn more](#) about hospital specific emissions and how they relate to different departments.



#### Taking Action

Learn to take action to decarbonize health care facilities and become more sustainable. These opportunities provide foundational knowledge of sustainability and empowers learners to work with their organizations to become more sustainable. Start your journey today!

- [HealthQuest™](#) Program
- [Operation Decarbonization: A Sustainability Game Plan for Health Care Facilities](#)
- [Sustainability Accelerator Tool \(SAT\)](#)
- [The Health Care Leader's Guide to Sustainability and Decarbonization](#)





## Optimize

- Energy to Care Dashboard
- HealQuest Program

## Educate

- Sustainability Tips
- Conservation Measures
- Success Stories
- Monographs

## Recognize

- Energy to Care Awards
- Sustainability Champion Award
- Sustained Performance Award



[ashe.org/sustainability](https://www.ashpe.org/sustainability)

# Move Your Career Forward In a Way That Works for You!

---

- Solve practical problems
- Work toward certification
- Expand your knowledge in health care facility management, construction and code compliance



Explore  
offerings

# Training Made Easy

Keep your teams' critical industry knowledge up to date without the cost of travel and lodging

Let ASHE bring the education to you!

Learn more

Inquire about  
**ASHE's hosted and  
custom programs**



# ASHE In-Person Conferences & Exhibitions

---



**ASHE** Academy

September 15-19 | Chicago, IL

# Ways to Get Involved with ASHE

---

- Become a Proposal Reviewer or Course Beta Tester
- Apply to Be an ASHE Subject Matter Expert
- Volunteer at an Upcoming Education Event in your Area

**Contact the Education team at [ASHEducation@aha.org](mailto:ASHEducation@aha.org)**



# Additional Ways to Get Involved with ASHE

---

- **Participate in ASHE's salary survey**
- **Participate in ASHE's membership survey**
- **Post or respond to threads on the myASHE forum**
- **Submit a Voices of ASHE**



**Contact [ASHE@aha.org](mailto:ASHE@aha.org) with questions!**

# Advance Patient Safety – Get Certified!



**Health Care Physical  
Environment Worker  
Certification**



**Certified Health Care  
Constructor**



**Certified Health Care  
Facility Manager**



**Mechanic Evaluation and  
Certification for Healthcare**












**American College of  
Healthcare Architects  
Certification**

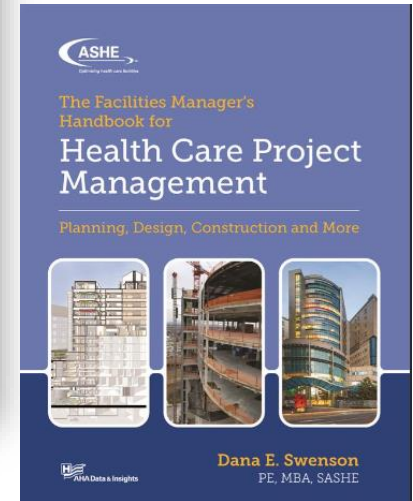
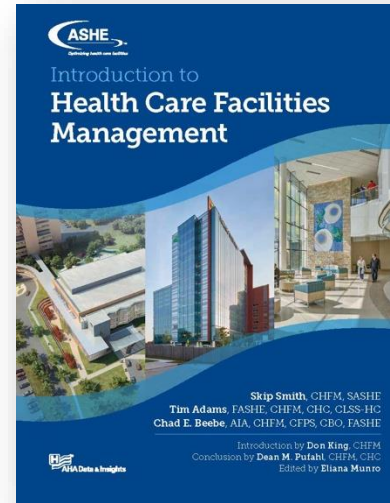
# Minimize risk – promote your ASHE certification





# Growing Your Skills: The Health Care Facilities Management Essentials Series

 <b>Introduction to Health Care Facilities Management</b> Handbook Education	 <b>Health Care Project Management</b> Handbook Education	 <b>Compliance</b> Handbook Education
 <b>Finance</b> Coming Soon	 <b>Administration</b> Coming Soon	 <b>Maintenance and Operations</b> Coming Q1 2025
 <b>Risk</b> Coming Q3 2025	 <b>Sustainability</b> Coming Q3 2025	 <b>Qualifications</b> Coming Q4 2025



# Health Facilities Management (HFM) Media

---



**Automatic  
subscription when  
you join!**

- Magazine publishes 6x/year in print and digital format.
- Comprehensive coverage of the unique challenges facing the field.
- Chance to earn continuing education credits.
- Additional content available online and via e-Newsletters.

# Are You Ready to Optimize?

---



## Health Care Facility Management Professional

Receive the latest updates and education regarding health care facility codes and standards, and resources for advocating on behalf of your facility. Connect with 12,000+ professionals to share best practices and exchange innovative ideas.

Join as a Professional Active Member (PAM)



## Architect or Design Professional

Stay informed on topics related to health care planning and design through exclusive and discounted resources, education and conferences, including the PDC Summit. Join our online network to connect, learn and innovate with others in the field.

Join as an Associate Member (ASC)



## Contractor/Construction Professional

Access exclusive industry updates, trusted resources and discounted education, including certification exam review programs, specifically focused on practicing construction in a health care environment. Connect and network with 12,000+ industry professionals.

Join as an Associate Member (ASC)



## Health Care Service, Manufacturing, or Consulting Professional

Foster business relationships within our community of 12,000+ industry professionals, and learn about how you can help solve the challenges they're faced with. Gain recognition as a trusted provider among health care facility customers by aligning with ASHE.

Join as an Associate Member (ASC)

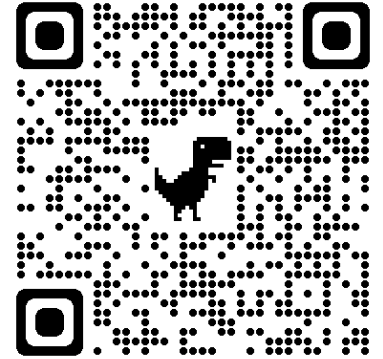
# Join ASHE Today!

---

- ✓ Complimentary Access to ASHE's On Demand Quick Trainings
- ✓ Discounts on products & registration
- ✓ Advocacy Alerts
- ✓ Access to MyASHE – a national forum for questions & discussion
- ✓ Career support
- ✓ Automatic subscriptions (weekly newsletters & *HFM Media*)

[ashe.org/join](https://ashe.org/join)

or scan



# Questions?

---

